

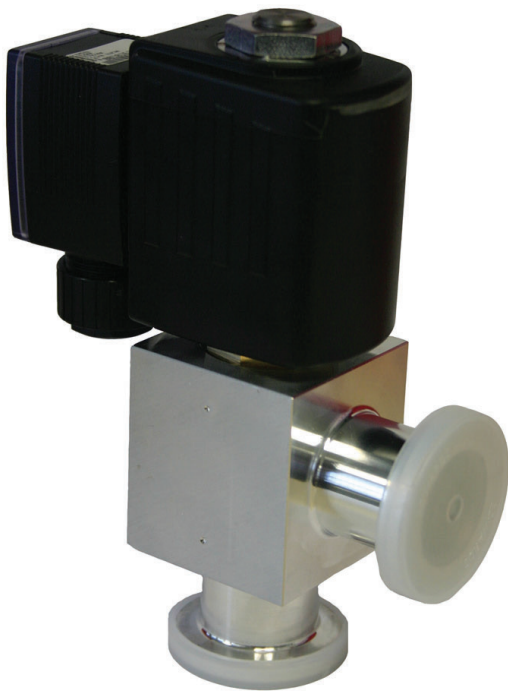
# LCPVEK SOLENOID OPERATED ISOLATION VALVES 24V

[edwardsvacuum.com](http://edwardsvacuum.com)

**Edwards' aluminium LCPVEK valves are designed for vacuum applications which need a compact, simple, solenoid operation valve to control gas flow.**

These economical valves are ideal for a number of duties ranging from simple laboratory pump isolation to OEM vacuum system integration and design. Their versatility makes them effective both in vacuum pipelines and in chamber admittance applications.

Careful design of the solenoid power control and vacuum isolation components delivers efficient magnetic actuation with optimum vacuum performance at an affordable price.



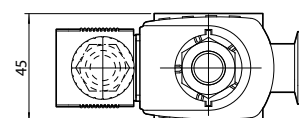
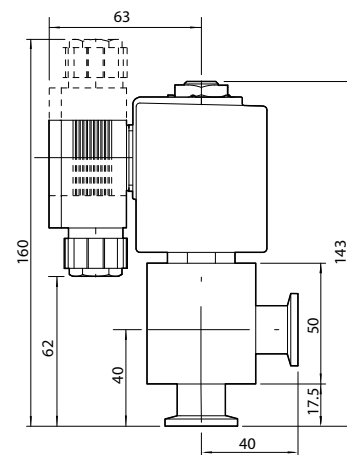
## FEATURES AND BENEFITS

---

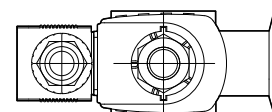
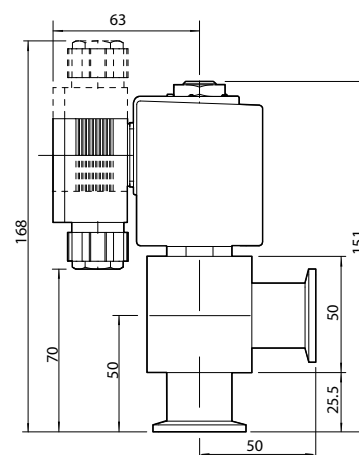
- Economical design
- Electrical actuation
- Low power requirements
- Electronic boost power supply
- Efficient magnetic design

TECHNICAL DATA

| LCPVEK                                 |   |  |
|--|---|--|
| Valve actuation type                   | Single acting, electrically opened, spring return |  |
| Molecular conductance                  | 1.5 ls <sup>-1</sup>                              |  |
| Pressure range                         | mbar (Torr)                                       | 1 x 10 <sup>-6</sup> - 1000 (7.5 x 10 <sup>-7</sup> - 750) |
| Max pressure differential (open/close) | mbar (Torr)                                       | 1000 (750)   |
| Time to open                           | ms  | 20   |
| Time to close                          | ms  | 50   |
| Max cycle frequency                    | h <sup>-1</sup>                                   | 600  |
| Leak rate                              | mbar  | Typically 1 x 10 <sup>-6</sup> ls <sup>-1</sup>            |
|  | Torr  | Typically 7.5 x 10 <sup>-7</sup> ls <sup>-1</sup>          |
| Power consumption                      |   |  |
| Open                                   | 72 W for 400 ms / 50-110 ms (a.c./d.c. supply)    |  |
| Hold                                   | 5 W a.c./d.c.                                     |  |
| Operating temperature range            | -10 to 55 °C                                      |  |
| Weight                                 |   |  |
| LCPV16EK                               | g (oz)  | 900 (31)   |
| LCPV25EK                               | g (oz)  | 900 (31)   |
| Enclosure rating                       | IP65  |  |
| Voltage                                |   |  |
| 24 V a.c./d.c.                         | +/- 10%   |  |
| 230 V                                  |   |  |
| 110 V                                  |   |  |
| Construction materials                 |   |  |
| Body                                   | Aluminium, stainless steel, silver                |  |
| Seals                                  | FKM Fluoroelastomer                               |  |



NW16



NW25

ORDERING INFORMATION

| Description                             | Order No. |
|---|-----------|
| LCPV16EKA 24 V a.c./d.c. Solenoid Valve | C41780200 |
| LCPV25EKA 24 V a.c./d.c. Solenoid Valve | C41790200 |

Publication Number: 3601 0796 01  
 © Edwards Limited 2016. All rights reserved Edwards and the Edwards logo are trademarks of Edwards Limited

Whilst we make every effort to ensure that we accurately describe our products and services, we give no guarantee as to the accuracy or completeness of any information provided in this datasheet.

Edwards Ltd, registered in England and Wales  
 No. 6124750, registered office: Innovation Drive, Burgess Hill, West Sussex, RH15 9TW, UK.

