

# nEXT730 AND nEXT930 TURBOMOLECULAR PUMP

edwardsvacuum.com

**Edwards are proud to introduce two new additions to the nEXT product family, the nEXT730 and the nEXT930. With the nEXT730 and nEXT930, Edwards is extending the range of our market leading nEXT platform with two new larger pumps offering speeds significantly over 700 l/s and 900 l/s for nitrogen.**

As well as addressing the general R&D market, where faster pumping speeds are sometimes required, these pumps are also designed to meet the requirements of the coating market and other diffuse market sectors such as Heat treatment, Furnace applications, Ebeam welding, Etch, Ion implant, Degassing and Cylinder evacuation.

For our OEM customers derivative versions of these products can be developed, just like the existing nEXT pumps, and like the existing nEXT pumps split flow variants are possible. This will give benefits for our customers with larger instruments as well as the possibility to reduce the total number of pumps on existing instruments.

The new products offer market leading performance for pumps of their class, and in a compact footprint. The pumps feature bearings with a typical life time of at least 4 years with no maintenance, which can then be replaced simply and economically by the customer themselves when required or customers may choose from our other service support offerings.

The pumps are able to operate in any orientation, and are supported by a full range of accessories for cooling, venting, powering and control.

## Features and benefits

- Class leading pumping speeds
- Outstanding compression ratios
- Ease of integration and installation
- Assured reliability
- End user service capability
- Full nEXT established communication interface

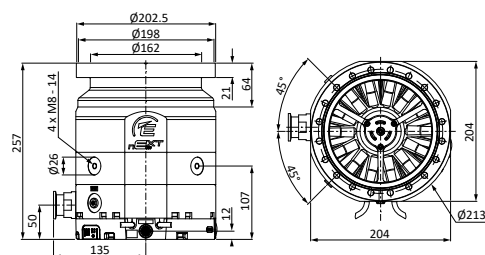


Technical data

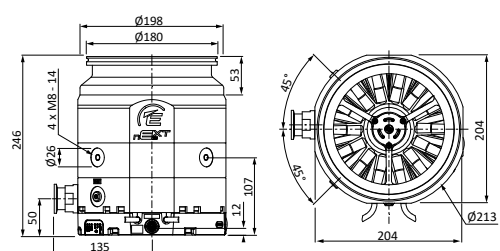
	Units	nEXT730D		nEXT930D	
		ISO-K 160	CF 160	ISO-K 200	CF 200
<b>Main inlet pumping speed</b>					
N <sub>2</sub> l s <sup>-1</sup>	l/s	730		925	
He l s <sup>-1</sup>	l/s	820		905	
H <sub>2</sub> l s <sup>-1</sup>	l/s	715		735	
Ar l s <sup>-1</sup>	l/s	665		865	
<b>Peak compression ratio from the backing port to the main inlet port</b>					
N <sub>2</sub>		>10 <sup>11</sup>		>10 <sup>11</sup>	
He		1.2X10 <sup>8</sup>		1.2X10 <sup>8</sup>	
H <sub>2</sub>		4X10 <sup>6</sup>		4X10 <sup>6</sup>	
Ar		>10 <sup>11</sup>		>10 <sup>11</sup>	
Ultimate pressure (mbar) (CF)		3.0X10 <sup>-10</sup>		3.0X10 <sup>-10</sup>	
Weight (kg)		14.6	19.6	15.4	21.7
<b>Throughput at full speed:</b>					
N <sub>2</sub>	mbar l/s	14		14	
He	mbar l/s	21		21	
H <sub>2</sub>	mbar l/s	>15		>15	
Ar	mbar l/s	3.5		3.5	

Dimensions

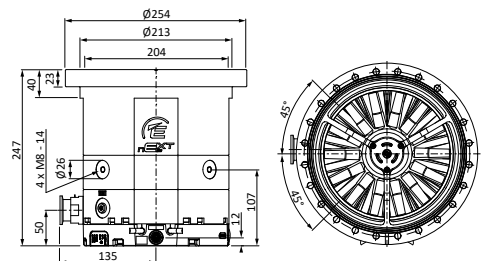
nEXT730D CF160



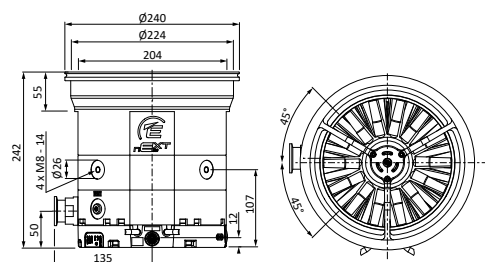
nEXT730D ISO-K160



nEXT930D CF200



nEXT930D ISO-K200



GLOBAL CONTACTS

Publication Number: 3601 0620 01  
 © Edwards Limited 2020. All rights reserved  
 Edwards and the Edwards logo are trademarks of  
 Edwards Limited.

Whilst we make every effort to ensure that we  
 accurately describe our products and services, we give  
 no guarantee as to the accuracy or completeness of any  
 information provided in this datasheet.

Edwards Ltd, registered in England and Wales  
 No. 6124750, registered office: Innovation Drive,  
 Burgess Hill, West Sussex, RH15 9TW, UK.

EMEA

UK +44 1444 253 000  
 (local rate) 08459 212223

Belgium +32 2 300 0730

France +33 1 4121 1256

Germany 0800 000 1456

Italy +39 02 48 4471

Israel +972 8 681 0633

ASIA PACIFIC

China +86 400 111 9618

India +91 20 4075 2222

Japan +81 47 458 8836

Korea +82 31 716 7070

Singapore +65 6546 8408

Taiwan +886 3758 1000

AMERICAS

USA +1 800 848 9800

Brazil +55 11 3952 5000

